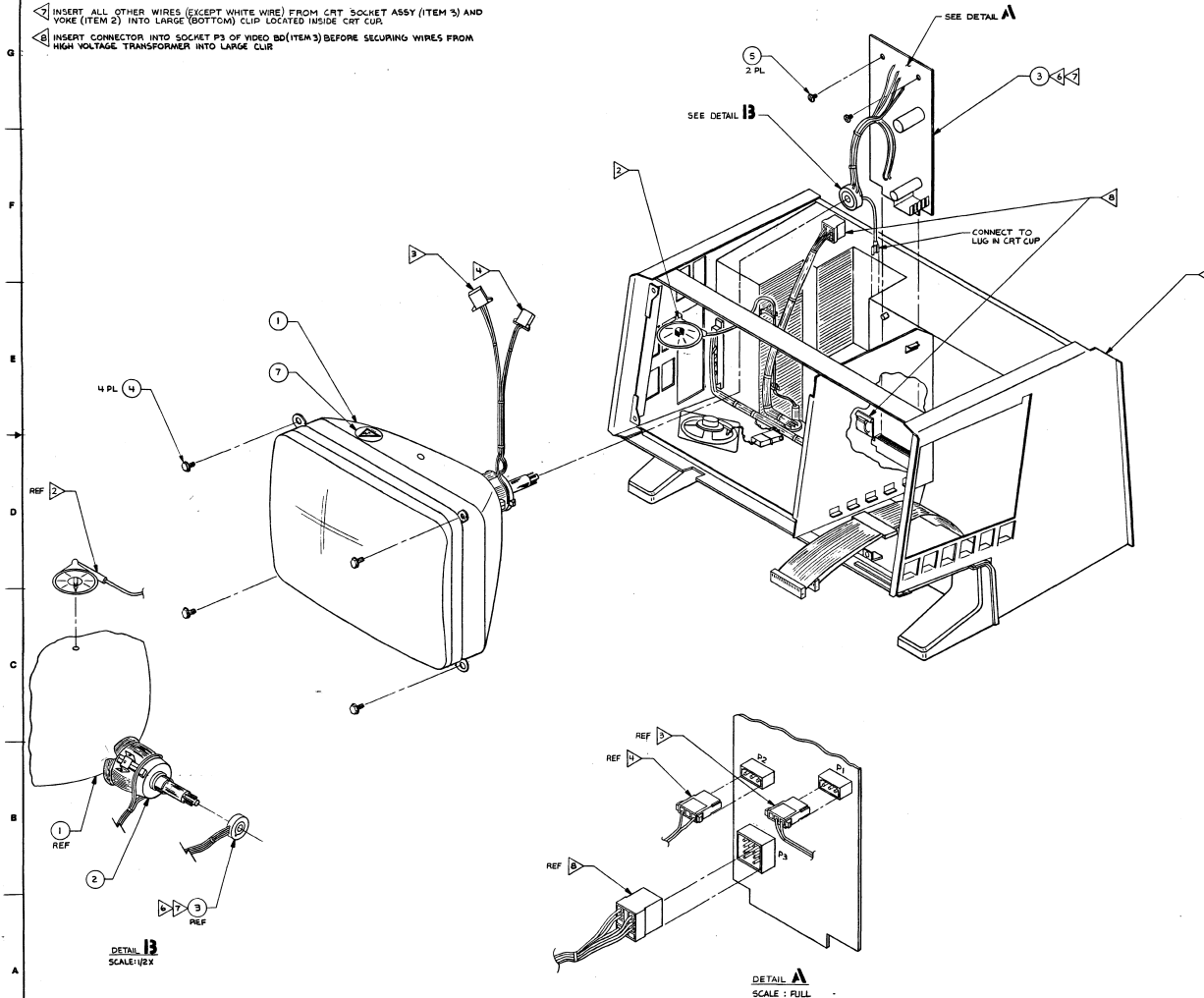


NOTE: UNLESS OTHERWISE SPECIFIED

- CHASSIS TWO SUBASSEMBLY, APPLE PART #620-5116.
- CONNECT TO CRT TUBE.
- CONNECTOR J1 ON DEFLECTION YOKE (BLUE & RED WIRES) INSERT INTO SOCKET P1 ON VIDEO BOARD.
- CONNECTOR J2 ON DEFLECTION YOKE (YELLOW & GREEN WIRES) INSERT INTO SOCKET P2 ON VIDEO BOARD.
- CONNECTOR FROM PLUG BACK TO SOCKET P3.
- INSERT YELLOW WIRE FROM CRT SOCKET ASSY (ITEM 3) INTO SMALL (TOP) CLIP LOCATED INSIDE CRT CUR.
- INSERT ALL OTHER WIRES (EXCEPT WHITE WIRE) FROM CRT SOCKET ASSY (ITEM 3) AND YOKE (ITEM 2) INTO LARGE (BOTTOM) CLIP LOCATED INSIDE CRT CUR.
- INSERT CONNECTOR INTO SOCKET P3 OF VIDEO BD (ITEM 3) BEFORE SECURING WIRES FROM HIGH VOLTAGE TRANSFORMER INTO LARGE CLIP.



REV	DATE	BY	REV	DATE	BY
A	8/7/80	INITIAL RELEASE			
B	9/1/80	ADDED NOTES 6 & 7			
C	9/1/80	FACTORY CLIP AND WIRE WERE TO LEFT SIDE CHASSIS			
D	9/1/80	ITEMS 1 AND 2 COMBINED TO BECOME ITEM 4.			
E	9/1/80	DELETED SPADE LUG TERMINAL, WHITE WIRE NOW CONNECTED TO CRT CUR. DELETED NOTE 5, ADDED NOTE 6.			
F	9/1/80	DELETED ITEM 6, ADDED ITEM 5 & 2.			
G	9/1/80	ADDED ITEM 7			
H	9/1/80	BOM CHANGE ONLY			

SEE SEPARATE BILL OF MATERIAL 620-5115

METRIC		apple computer inc.	
NOTICE OF PROPRIETARY PROPERTY			
THIS DOCUMENT CONTAINS INFORMATION THAT IS THE PROPERTY OF APPLE COMPUTER, INC. AND IS NOT TO BE DISCLOSED TO ANY OTHER PERSON OR ENTITY WITHOUT THE WRITTEN PERMISSION OF APPLE COMPUTER, INC.			
SUBASSEMBLY VIDEO ONE LISA			
1/2X			
620-5115-H			